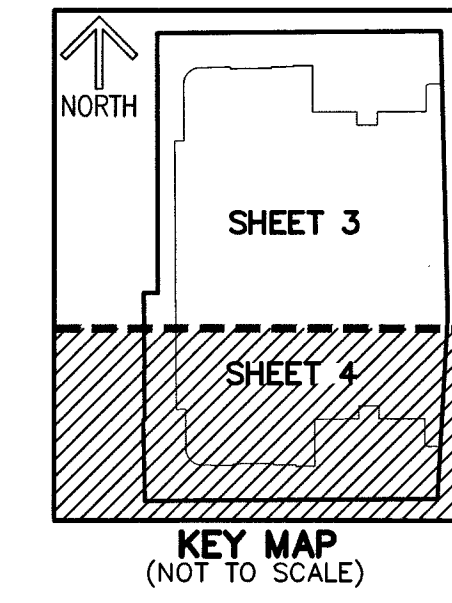


# HAVN RESIDENCES & YACHT CLUB

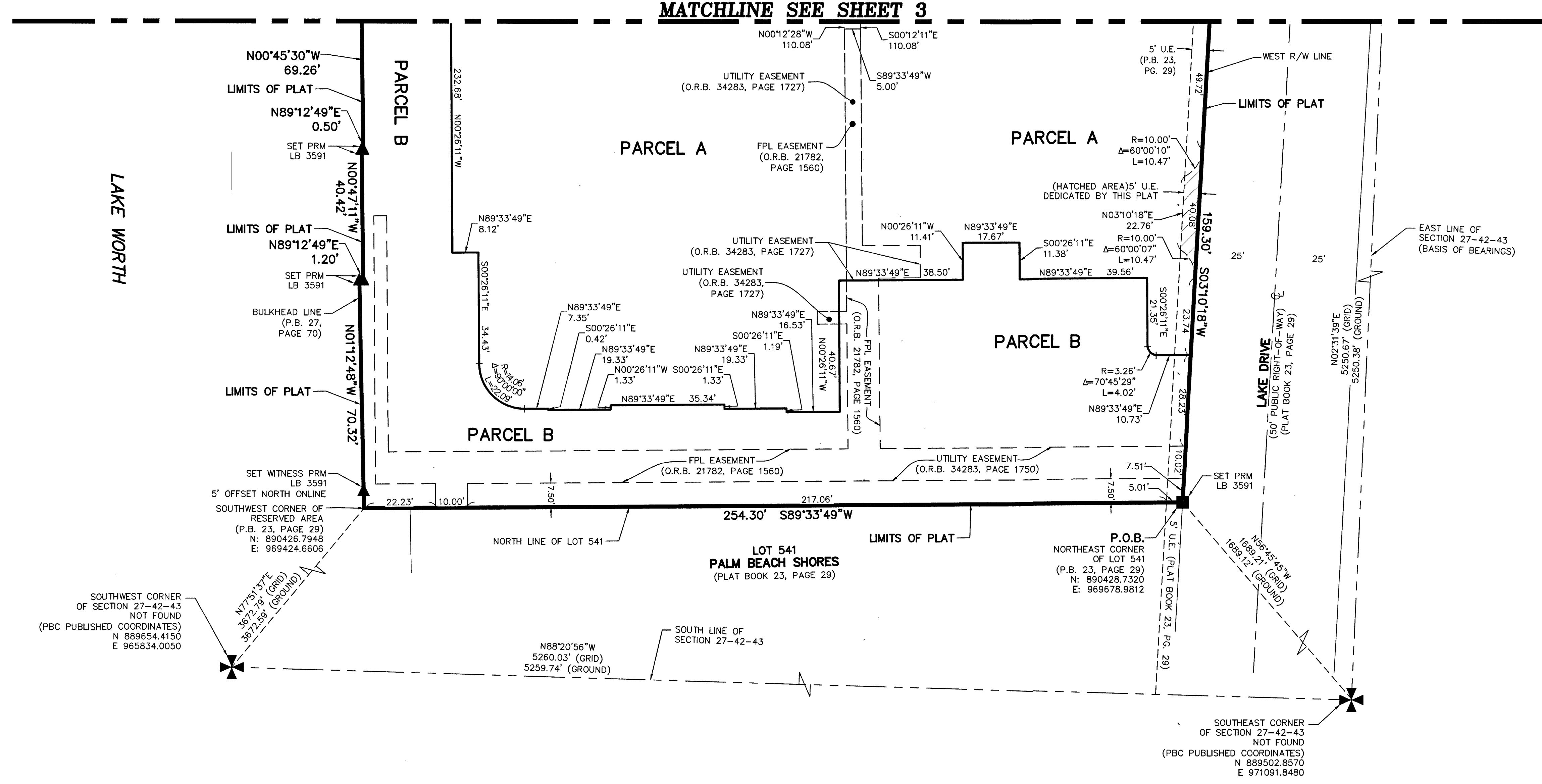
BEING A REPLAT OF ALL OF LOTS 536, 537, 538, 539 AND 540, AND ALL OF PRIVATE ROAD NO. 4 (LYING BETWEEN LOTS 539 AND 540) AND PARCEL MARKED RESERVED (LYING WEST OF LOTS 539 AND 540) AND PRIVATE ROAD NO. 4, PALM BEACH SHORES, AS RECORDED IN PLAT BOOK 23, PAGES 29 THROUGH 32 OF THE PUBLIC RECORDS OF PALM BEACH COUNTY, FLORIDA, LYING IN SECTION 27, TOWNSHIP 42 SOUTH, RANGE 43 EAST, TOWN OF PALM BEACH SHORES, PALM BEACH COUNTY, FLORIDA.

THIS INSTRUMENT PREPARED BY  
DAVID P. LINDLEY  
OF  
**CAULFIELD & WHEELER, INC.**  
SURVEYORS - ENGINEERS - PLANNERS  
7900 GLADES ROAD, SUITE 100  
BOCA RATON, FLORIDA 33434 - (561)392-1991

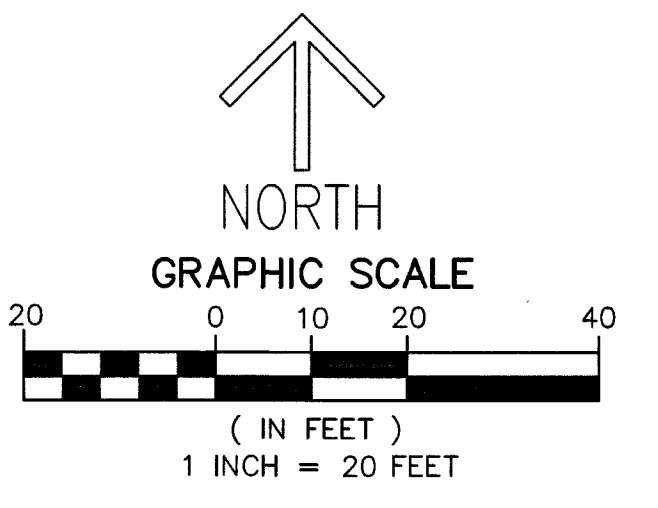


# 22

SHEET 4 OF 4



- LEGEND/ABBREVIATIONS:**
- P.O.C. - POINT OF COMMENCEMENT
  - P.O.B. - POINT OF BEGINNING
  - P.B. - PLAT BOOK
  - O.R.B. - OFFICIAL RECORD BOOK
  - PG(S) - PAGE(S)
  - Δ - DELTA (CENTRAL ANGLE)
  - R - RADIUS
  - L - ARC LENGTH
  - ℄ - CENTERLINE
  - E - EASTING (WHEN USED WITH COORDINATES)
  - N - NORTHING (WHEN USED WITH COORDINATES)
  - U.E. - UTILITY EASEMENT
  - PBC - PALM BEACH COUNTY
  - LB - LICENSED BUSINESS
  - NAD - NORTH AMERICAN DATUM
  - PRM - PERMANENT REFERENCE MONUMENT
  - R/W - RIGHT-OF-WAY
  - FPL - FLORIDA POWER & LIGHT
  - 27-42-43 - SECTION 27, TOWNSHIP 42 SOUTH, RANGE 43 EAST
  - PRM - DENOTES PERMANENT REFERENCE MONUMENT 5/8" IRON ROD & CAP WITH PLASTIC CAP STAMPED "C&W PRM LB3591" UNLESS OTHERWISE NOTED
  - ▲ - DENOTES SET PERMANENT REFERENCE MONUMENT NAIL AND DISC STAMPED "PRM" LB 3591



**NOTES**  
**COORDINATES, BEARINGS AND DISTANCES**

COORDINATES SHOWN ARE GRID  
DATUM = NAD 83 1990 ADJUSTMENT  
ZONE = FLORIDA EAST  
LINEAR UNIT = U.S. SURVEY FEET  
COORDINATE SYSTEM 1983 STATE PLANE  
TRANSVERSE MERCATOR PROJECTION

ALL DISTANCES ARE GROUND UNLESS OTHERWISE NOTED  
SCALE FACTOR = 1.000055053  
GROUND DISTANCE X SCALE FACTOR = GRID DISTANCE  
BEARINGS AS SHOWN HEREON ARE GRID DATUM,  
NAD 83 (1990 ADJUSTMENT), FLORIDA EAST ZONE.